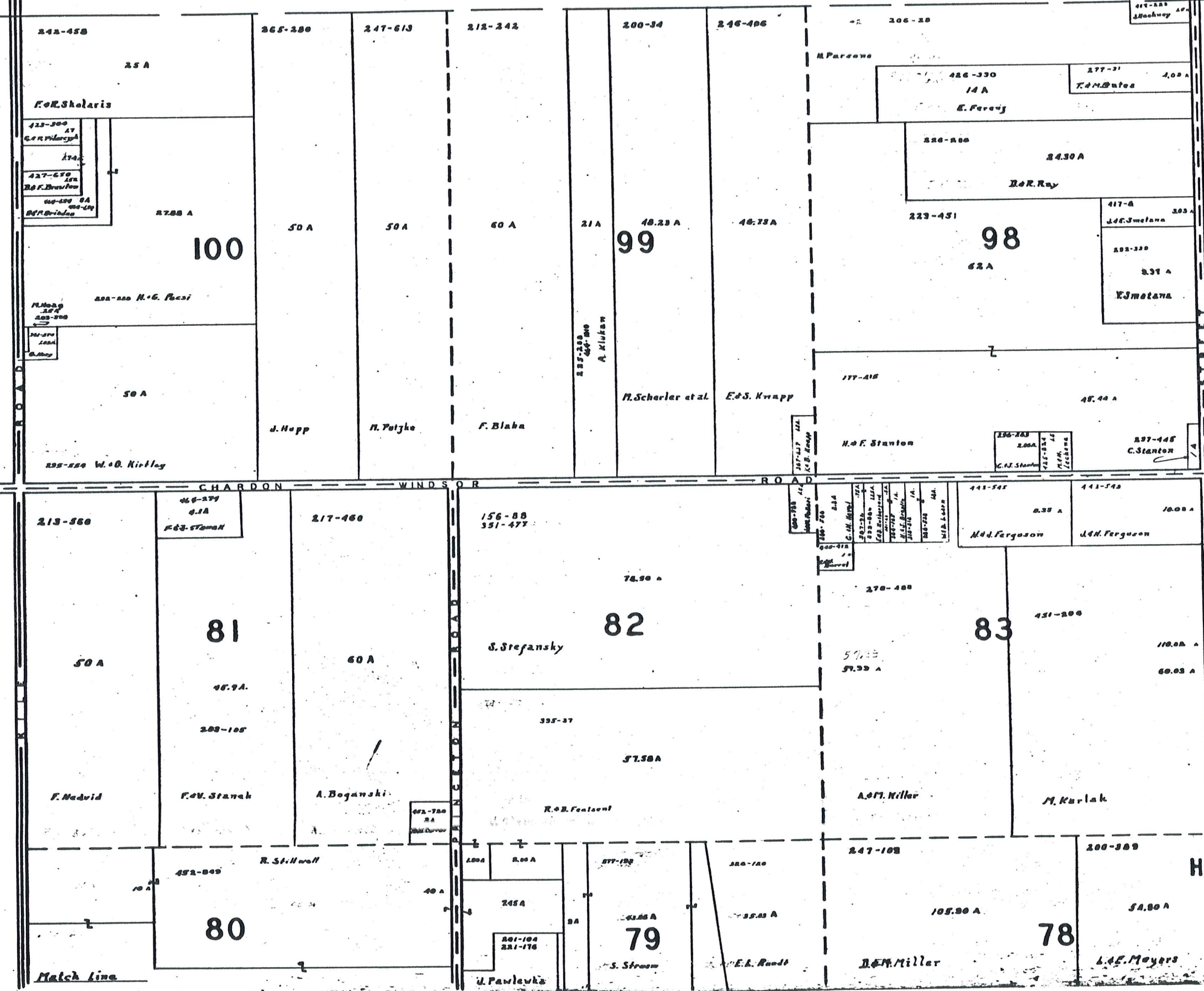


MONTVILLE TOWNSHIP

TOWNSHIP

CLARIDON



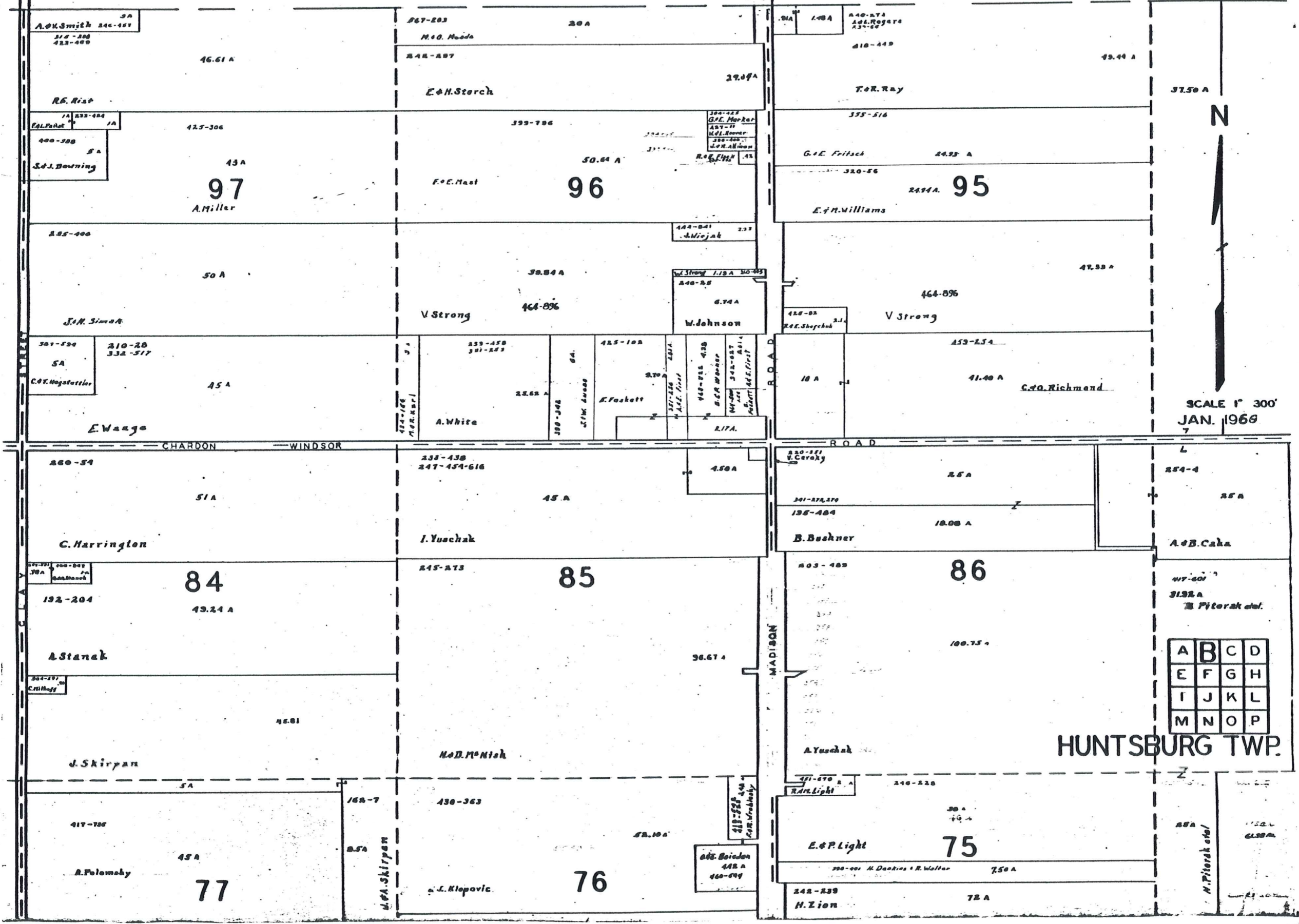
SCALE 1 300
JAN. 1966

A	B	C	D
E	F	G	H
I	J	K	L
M	N	O	P

HUNTSBURG TWP.

MONTVILLE

TOWNSHIP

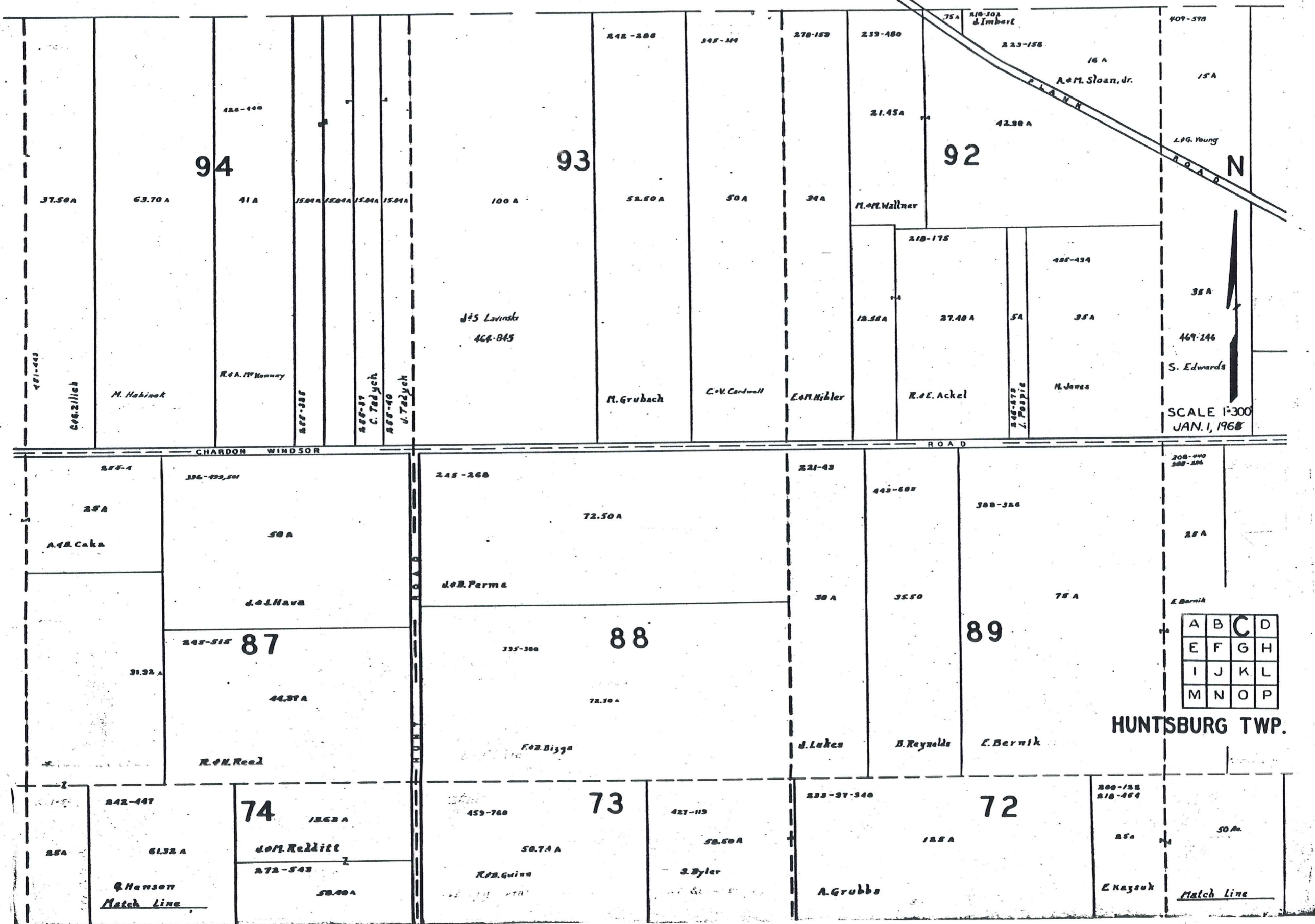


SCALE 1" = 300'
 JAN. 1966

A	B	C	D
E	F	G	H
I	J	K	L
M	N	O	P

HUNTSBURG TWP.

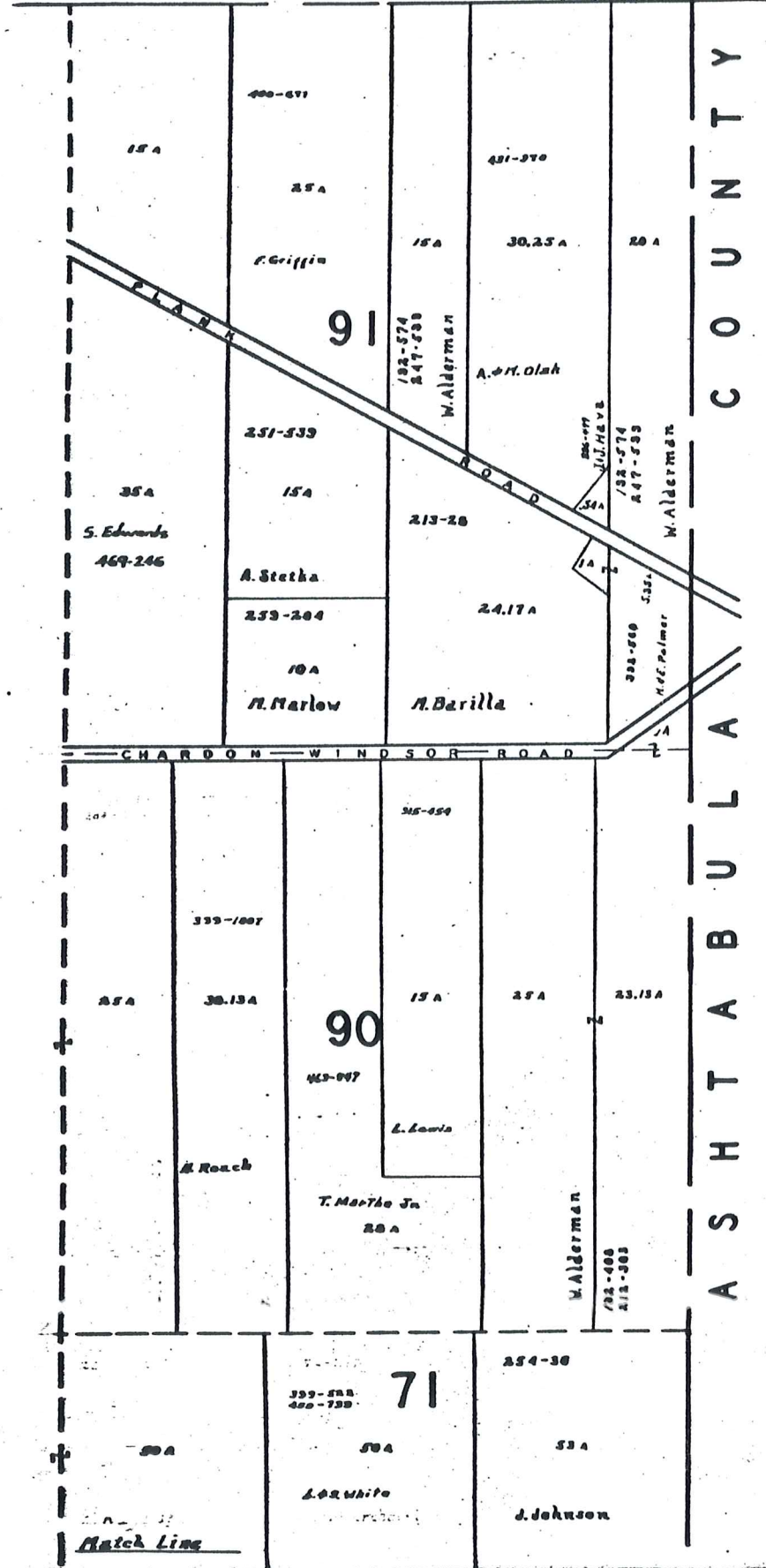
MONTVILLE TOWNSHIP



A	B	C	D
E	F	G	H
I	J	K	L
M	N	O	P

HUNTSBURG TWP.

MONTVILLE TWP.



C O U N T Y
A S H T A B U L A

67



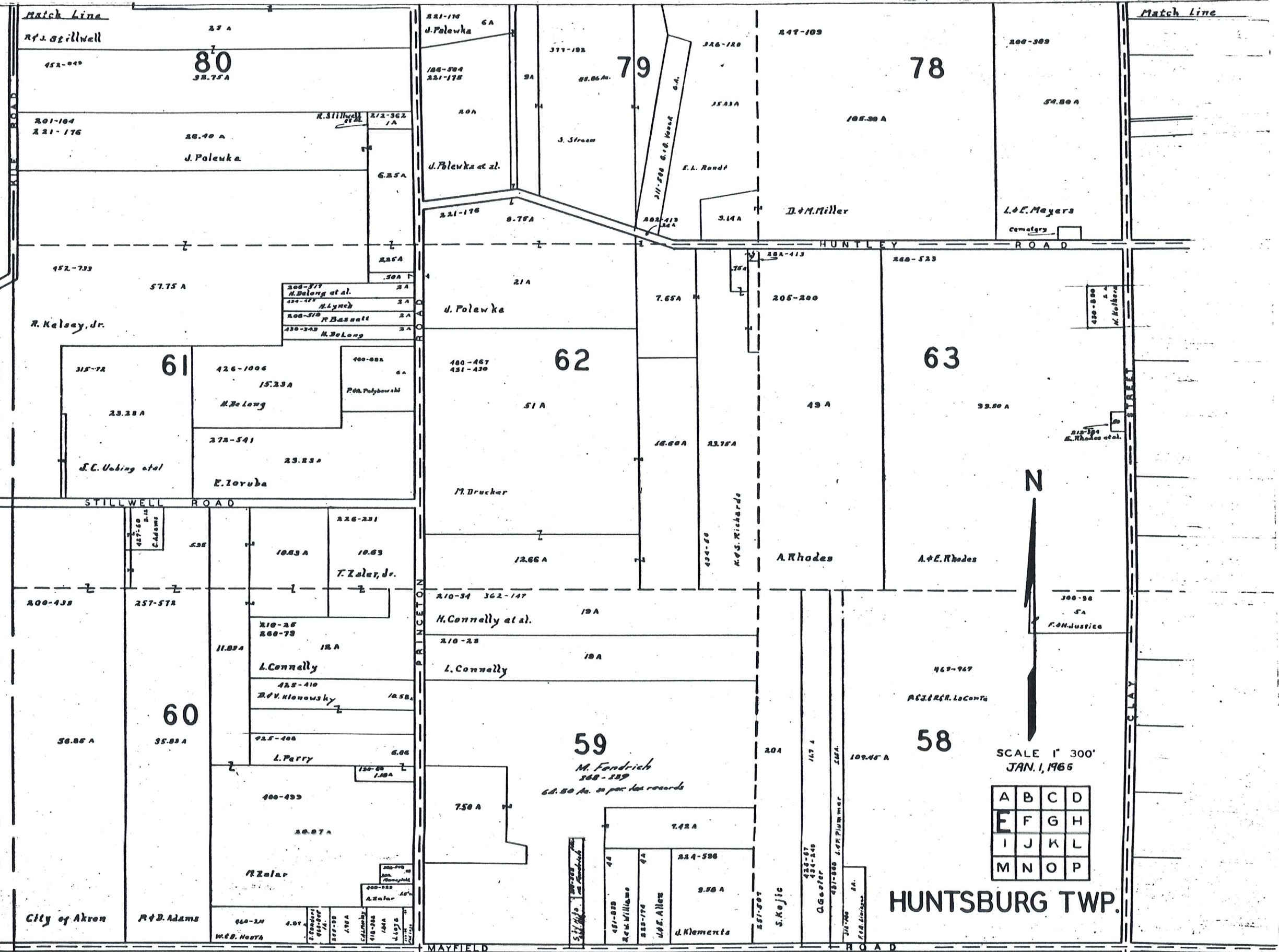
SCALE 1"=300'
JAN. 1, 1966

A	B	C	D
E	F	G	H
I	J	K	L
M	N	O	P

HUNTSBURG TWP.

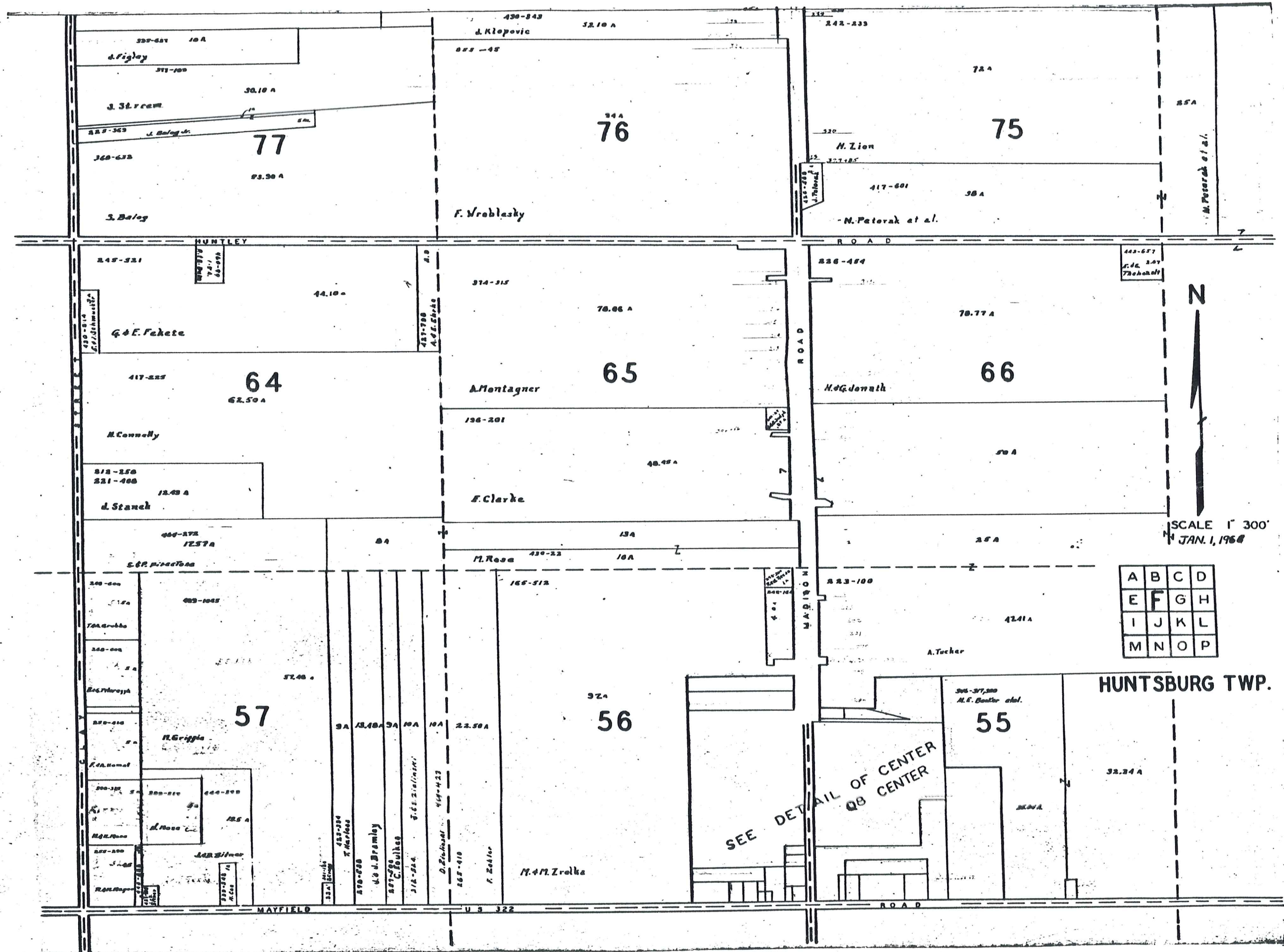
CLARIDON

TWP.



A	B	C	D
E	F	G	H
I	J	K	L
M	N	O	P

HUNTSBURG TWP.

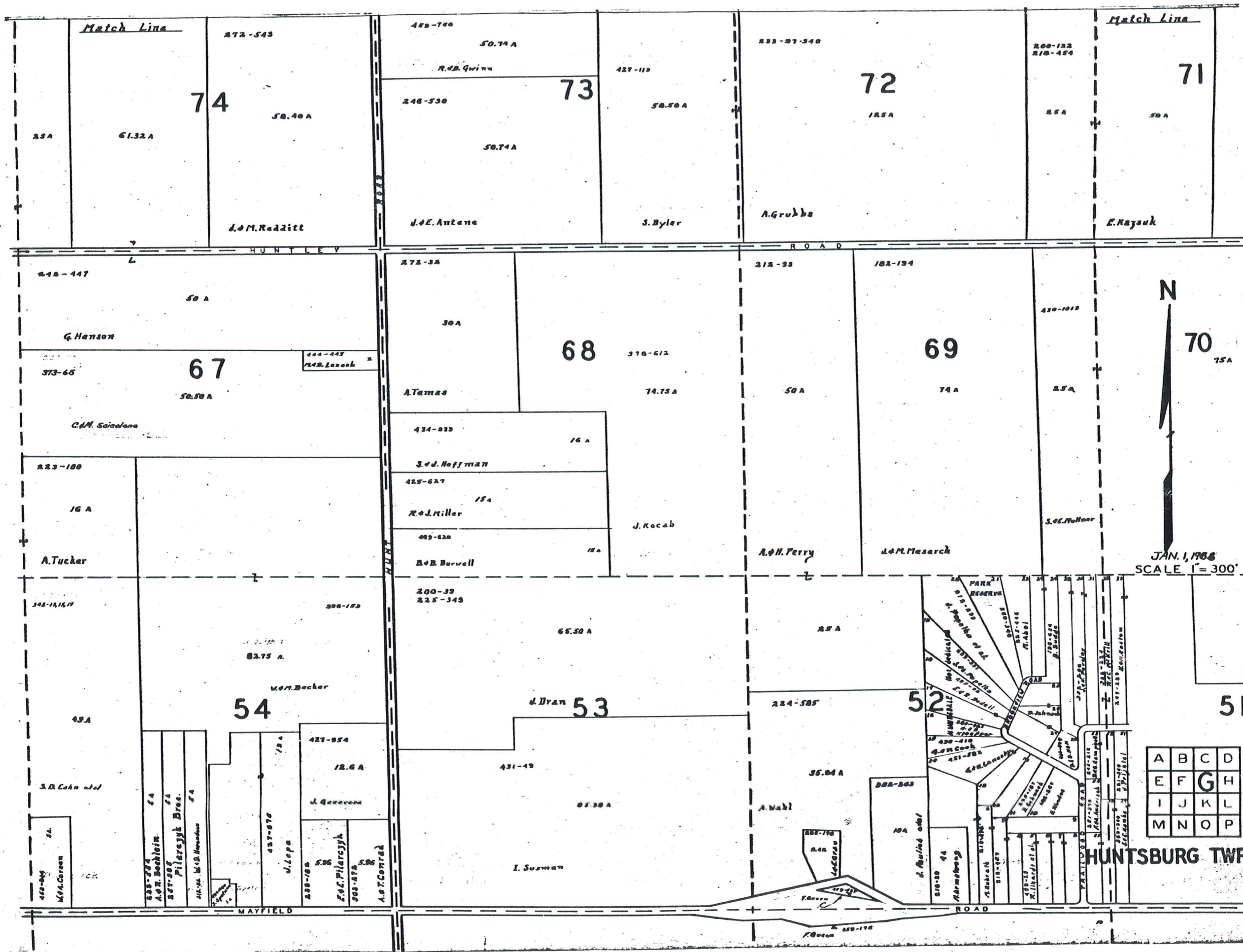


SCALE 1" = 300'
 JAN. 1, 1968

A	B	C	D
E	F	G	H
I	J	K	L
M	N	O	P

HUNTSBURG TWP.

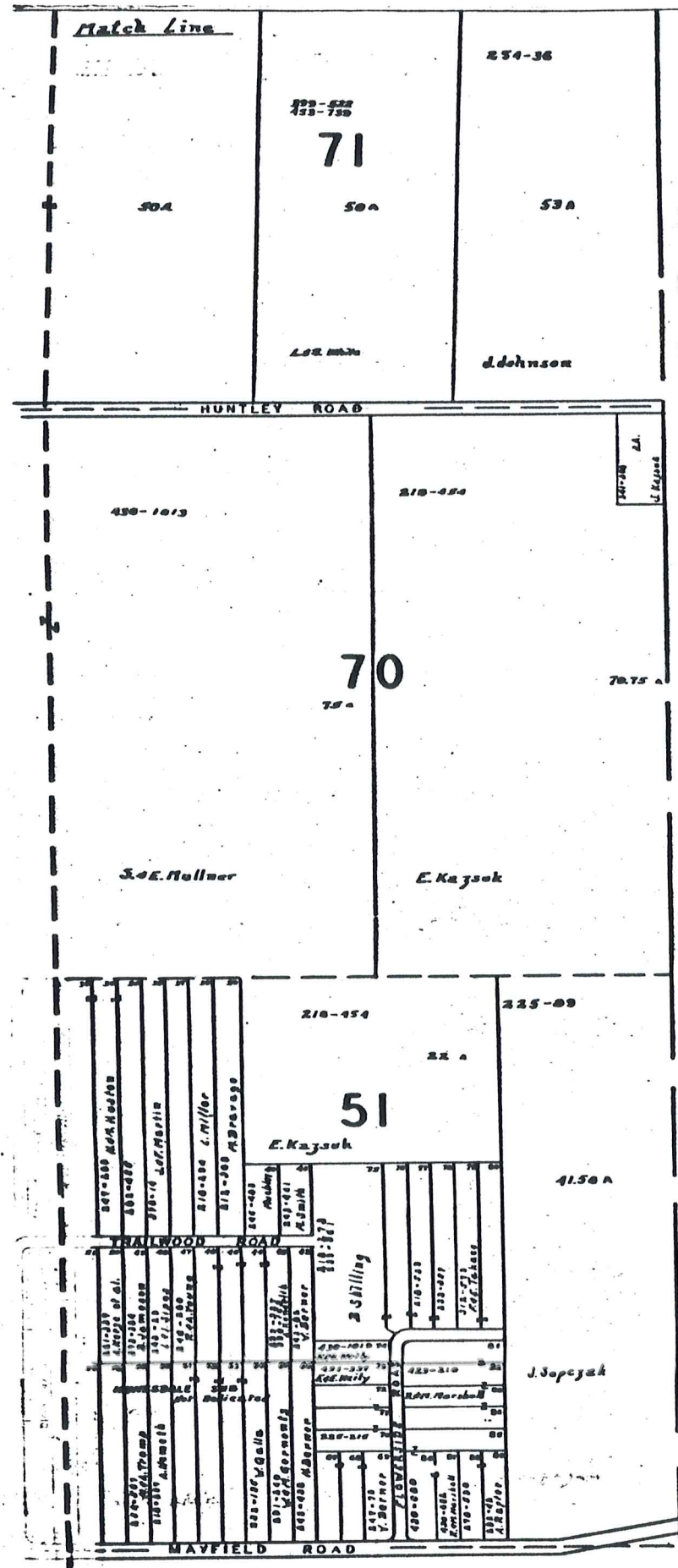
SEE DETAIL OF CENTER
 OF CENTER



JAN. 1, 1968
SCALE 1" = 300'

A	B	C	D
E	F	G	H
I	J	K	L
M	N	O	P

HUNTSBURG TWP.



A S H T A B U L L A C O U N T Y

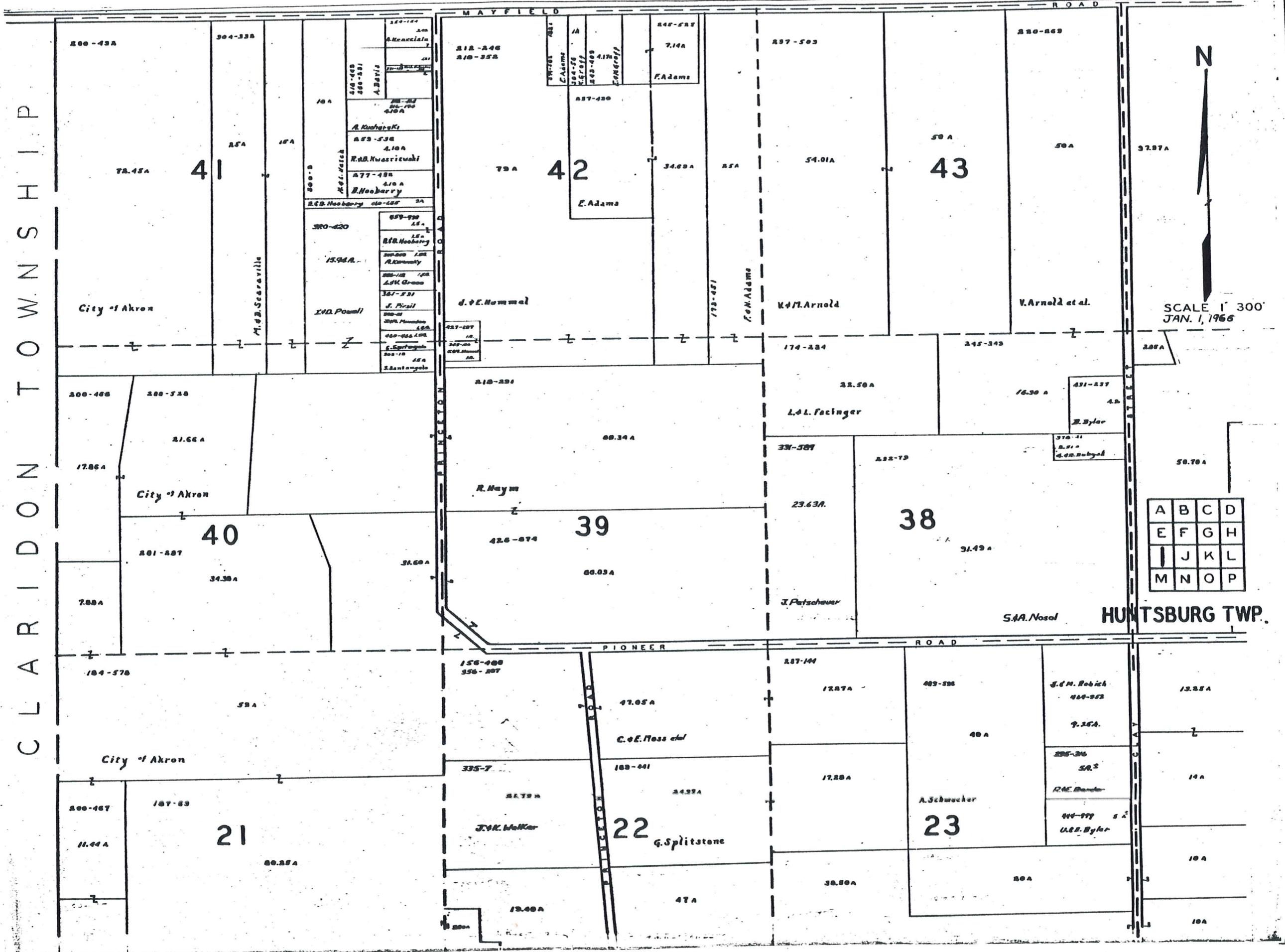


JAN. 1, 1966
Scale 1" = 300'

A	B	C	D
E	F	G	H
I	J	K	L
M	N	O	P

HUNTSBURG TWP.

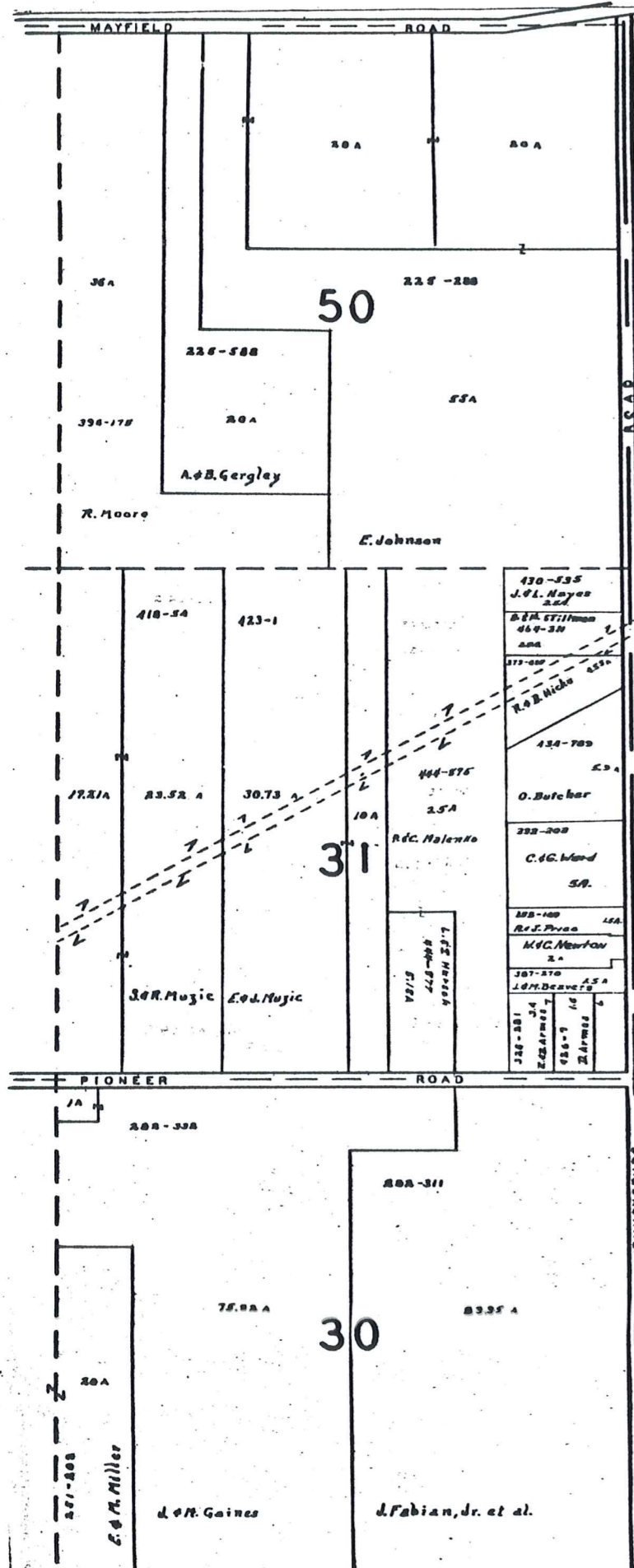
CLARIDON TOWNSHIP



SCALE 1" = 300'
JAN. 1, 1966

A	B	C	D
E	F	G	H
I	J	K	L
M	N	O	P

HUNTSBURG TWP.



A S H T A B U L A C O U N T Y

MAYFIELD ROAD - US 322

	1	2	3	4	A	5	6	7	8
400-301 R. Moore	1.00A 1A	1A C. R. Finkbeiner	1A M. Hayes et al.	1A	.60A 1A	1A	1A	1A	1.13A

SICZ SUBDIVISION
VOL. 8 PG. 87
LOT 44
SCALE 1" = 100'

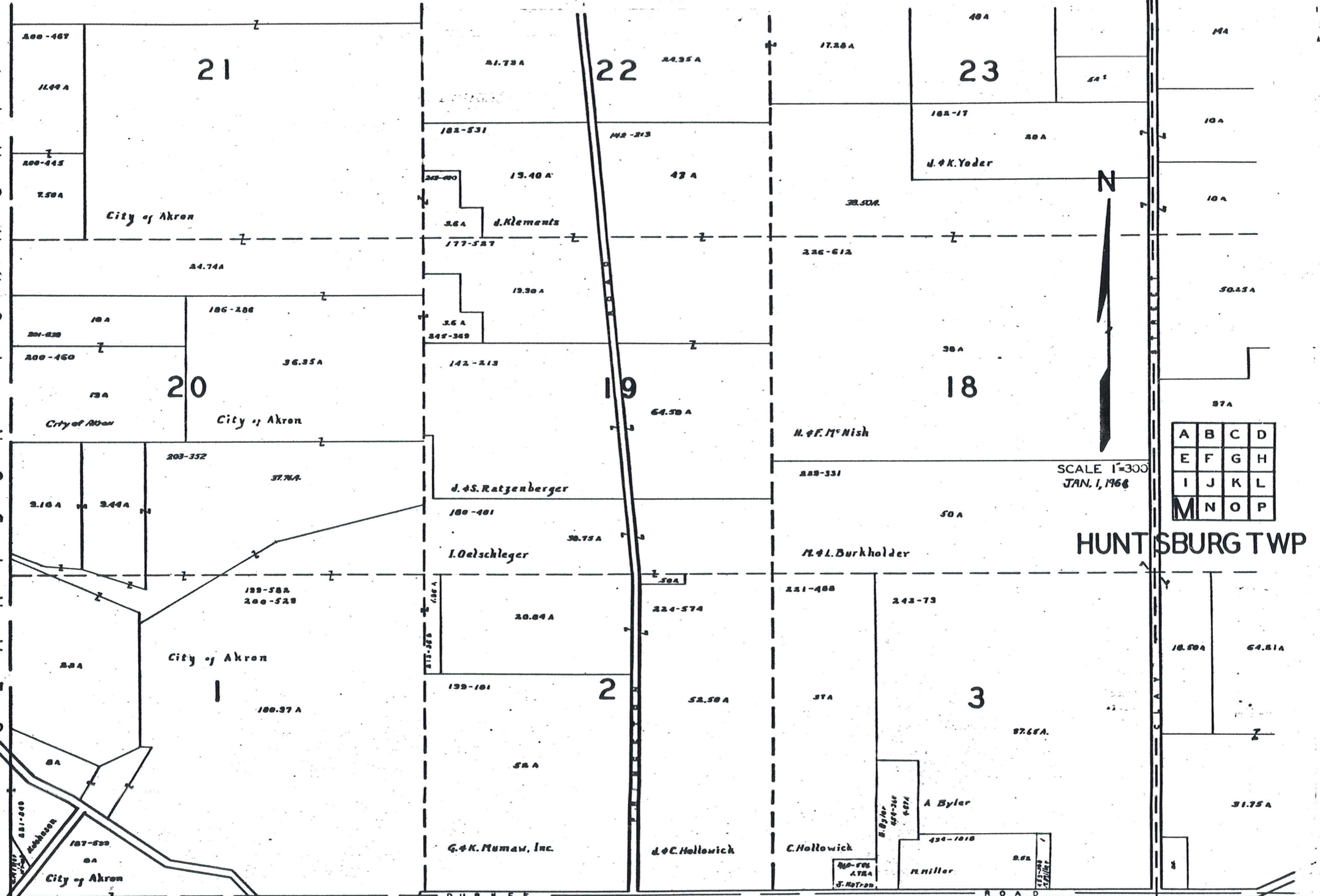


SCALE 1" = 300'
JAN. 1, 1966

A	B	C	D
E	F	G	H
I	J	K	L
M	N	O	P

HUNTSBURG TWP.

C L A R I D O N T O W N S H I P

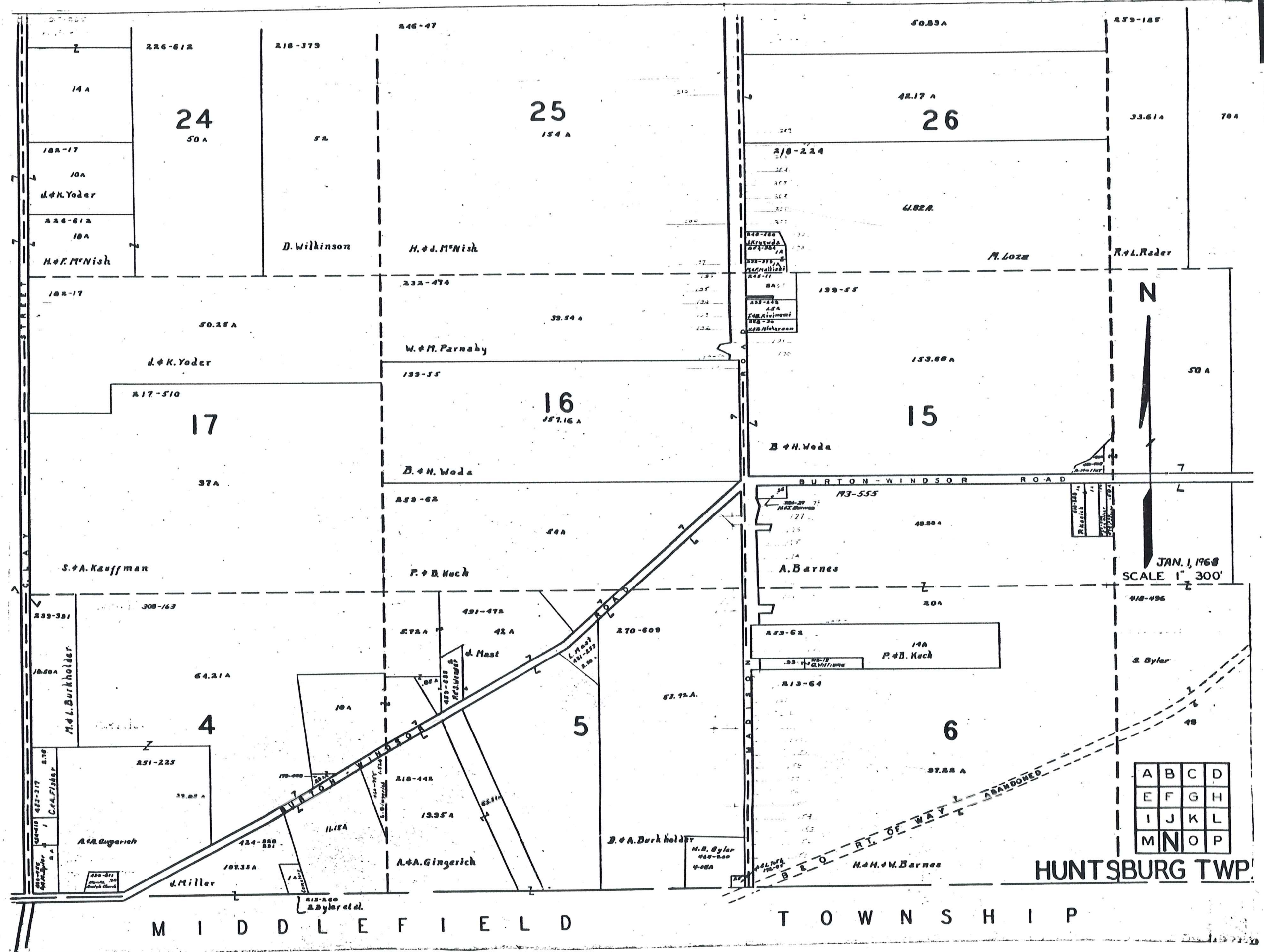


SCALE 1"=300'
JAN. 1, 1968

A	B	C	D
E	F	G	H
I	J	K	L
M	N	O	P

HUNTSBURG TWP

M I D D L E F I E L D T O W N S H I P

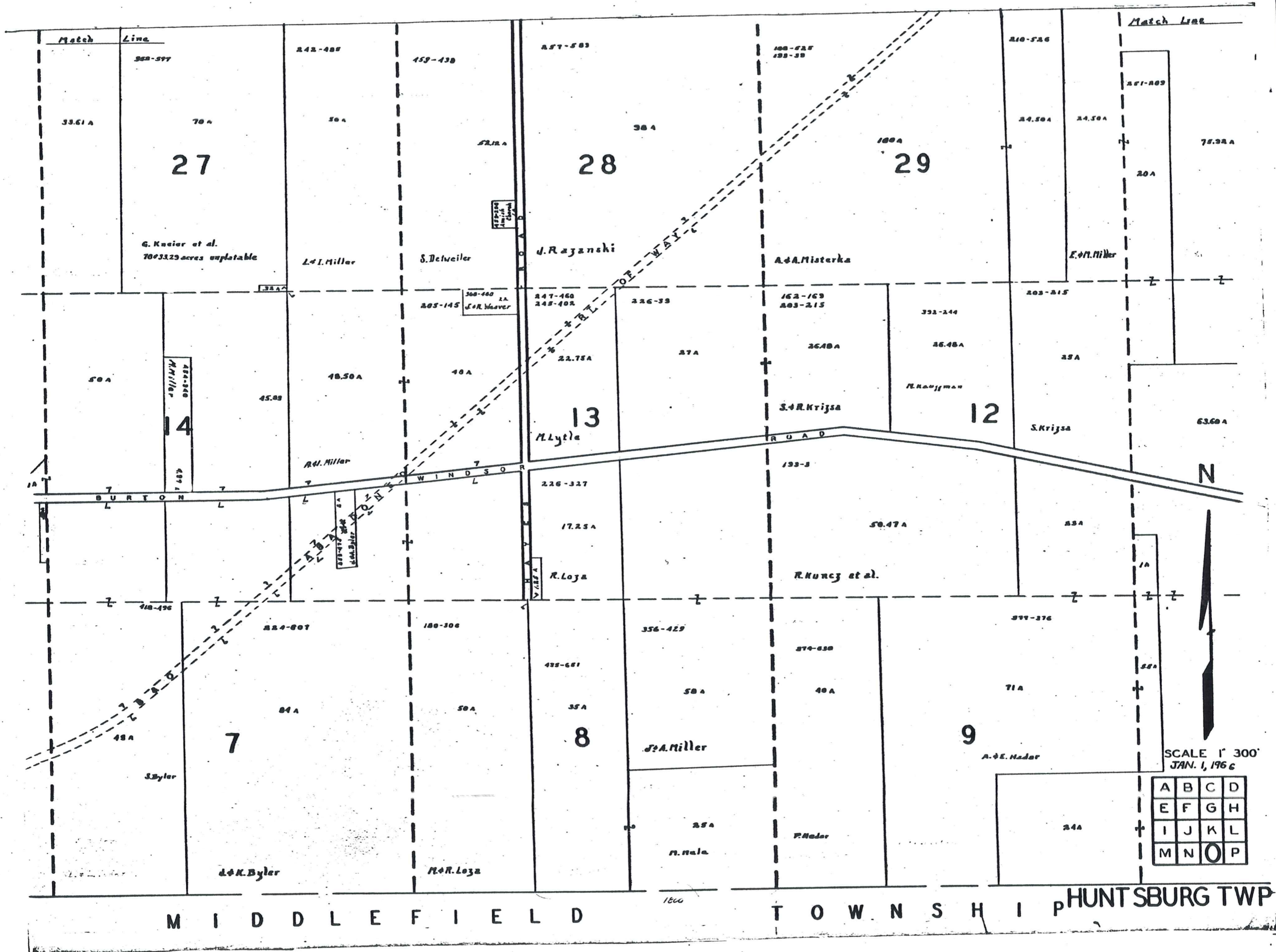


N
 JAN. 1, 1968
 SCALE 1" = 300'

A	B	C	D
E	F	G	H
I	J	K	L
M	N	O	P

HUNTSBURG TWP.

M I D D L E F I E L D T O W N S H I P



Match Line

Line

Match Line

33.61 A

27

G. Kucier et al.
70+3325 acres unplatted

242-488

30 A

L. I. Miller

459-438

52.12 A

S. Delweiler

457-583

38 A

28

J. Razanski

100-625
193-38

100 A

29

A. A. Mierka

210-526

24.50 A

24.50 A

E. P. Miller

247-209

20 A

75.32 A

50 A

14

M. Miller

45.89

10.50 A

R. I. Miller

205-145

300-400 2A
J. R. Weaver

40 A

247-460
248-402

13

M. Lytle

22.75 A

226-33

27 A

26.40 A

S. R. Krjisa

162-169
203-215

26.48 A

R. Knappman

12

203-215

25 A

S. Krjisa

63.60 A

BURTON

WINDSOR

ROAD

N

418-496

224-807

84 A

7

S. Byler

L. K. Byler

180-306

50 A

R. R. Loza

422-681

35 A

8

R. Loza

356-429

50 A

J. A. Miller

R. Nala

274-830

40 A

P. Nadar

399-376

71 A

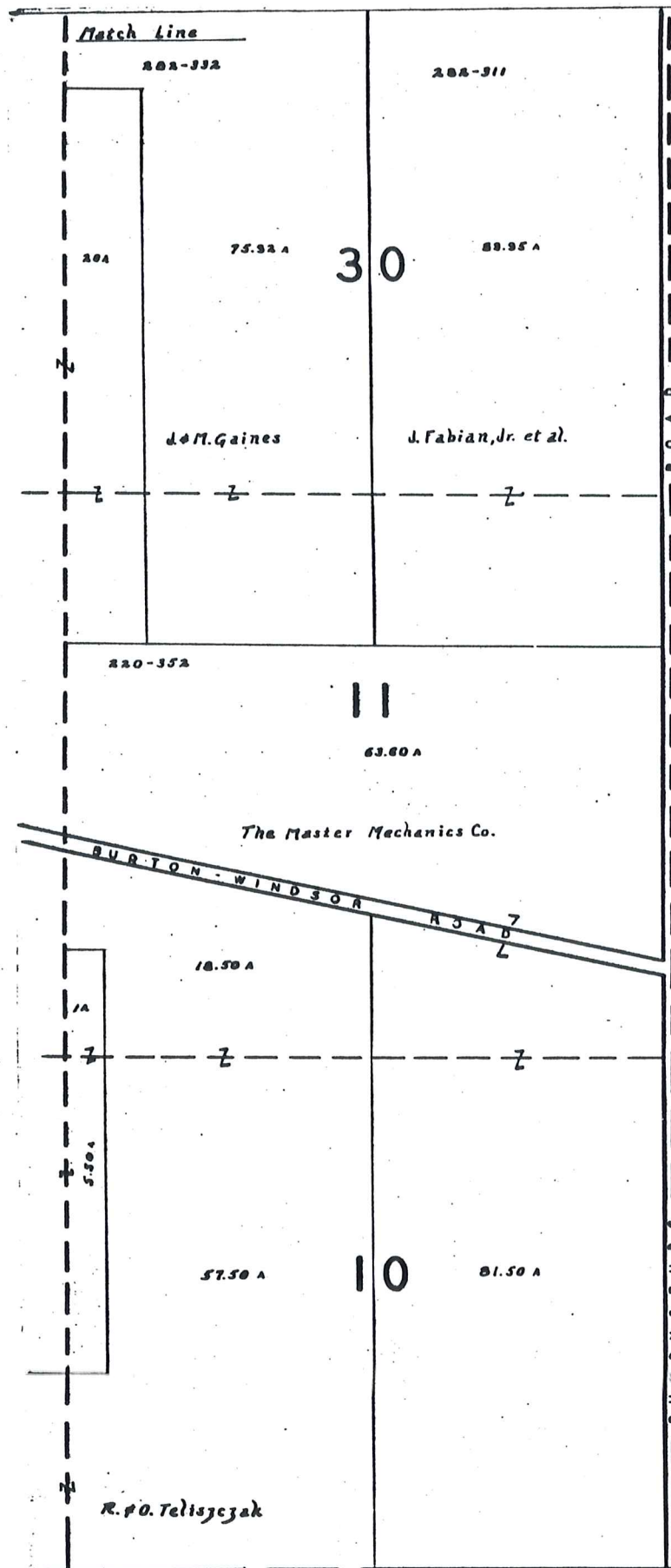
9

A. E. Nadar

24 A

M I D D L E F I E L D

T O W N S H I P H U N T S B U R G T W P



A S H T A B U L A C O U N T Y

M I D D L E F I E L D T W P.



SCALE 1" = 300'
JAN. 1, 1968

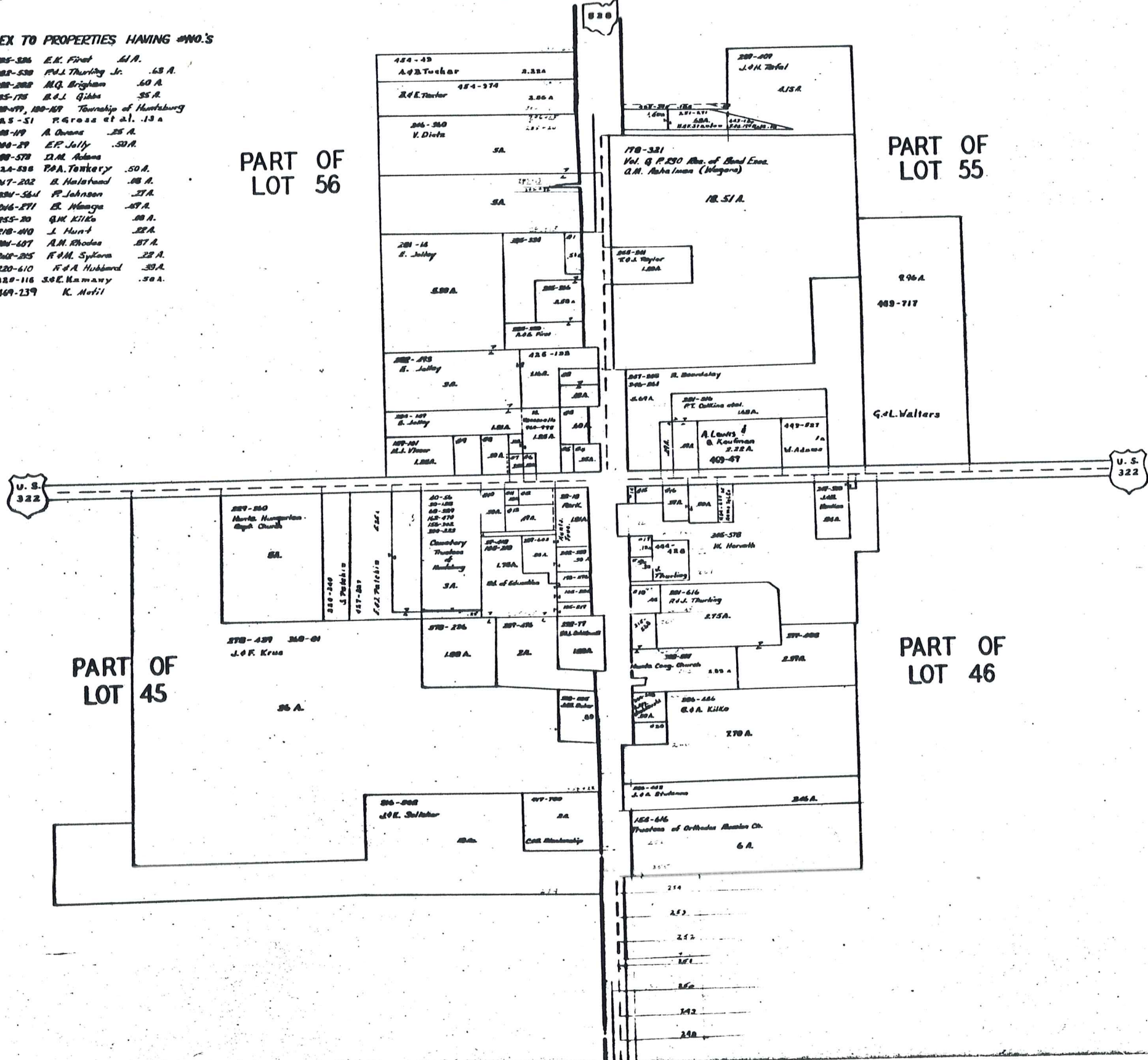
A	B	C	D
E	F	G	H
I	J	K	L
M	N	O	P

HUNT SBURG TWP.

HUNTSBURG TP. CENTER

INDEX TO PROPERTIES HAVING #NO.'S

- #1 285-286 E.K. First 61 A.
- #2 285-288 P.H. Thurley Jr. 63 A.
- #3 288-288 M.Q. Brigham 60 A.
- #4 285-178 B.L. Gibbs 55 A.
- #5 288-277, 288-277 Township of Huntsburg
- #6 285-51 P. Gross et al. 13 A.
- #7 288-179 A. Owens 25 A.
- #8 288-279 E.P. Jolly 50 A.
- #9 288-278 D.M. Adams 50 A.
- #10 288-288 P.A. Tanker 50 A.
- #11 287-282 B. Halstead 88 A.
- #12 288-281 P. Johnson 27 A.
- #13 286-271 E. Wanga 27 A.
- #14 285-20 G.M. Kille 88 A.
- #15 288-280 J. Hunt 22 A.
- #16 288-287 A.M. Rhodes 87 A.
- #17 288-285 R.M. Sykes 22 A.
- #18 288-280 F.A. Hubbard 39 A.
- #19 288-116 S.E. Mammy 30 A.
- #20 288-139 K. Neff



SCALE: 1 in. = 200'
JAN. 1, 1966

Q8 CENTER